



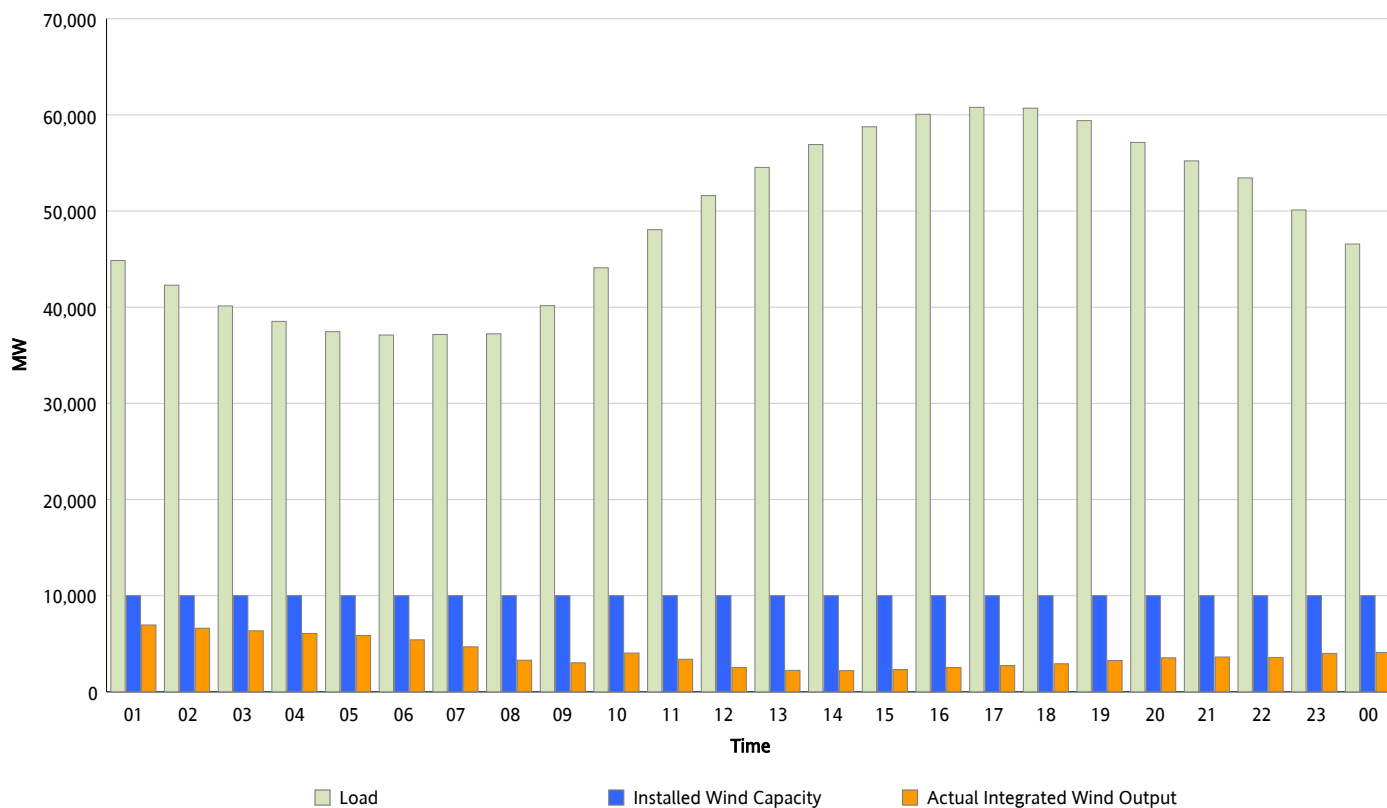
ERCOT Grid Operations

Wind Integration Report : 08/04/2012

Peak Load	60,778 MW
Load Peak Hour (HE)	17
Wind Over Peak	2,735 MW
Wind Record 06/19/12	8,368 MW
Max Wind Value*	7,084 MW
Wind Peak Time	00:22
Wind Integration %	15.66 %

Hourly Average Actual Load vs. Actual Wind Output

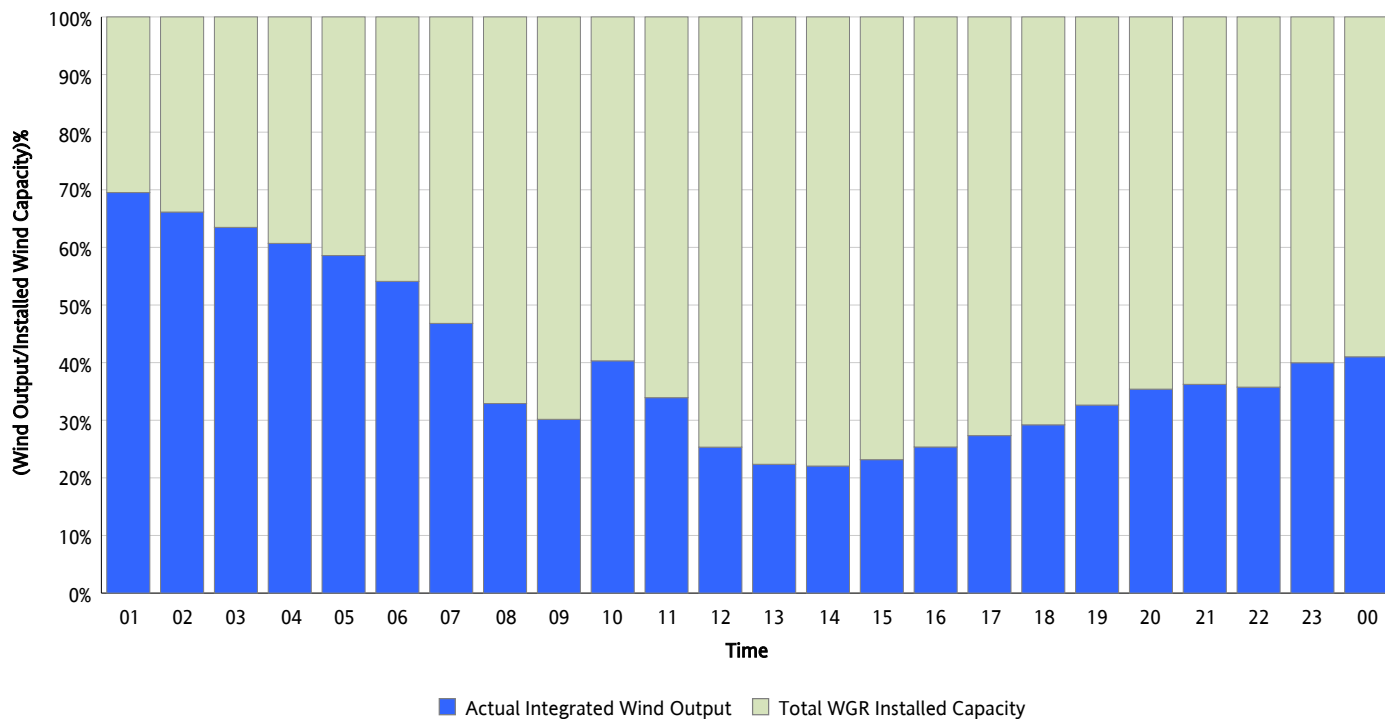
08/04/2012



* Wind Record and Wind Max represent instantaneous values and the rest of the values are integrated over the hour

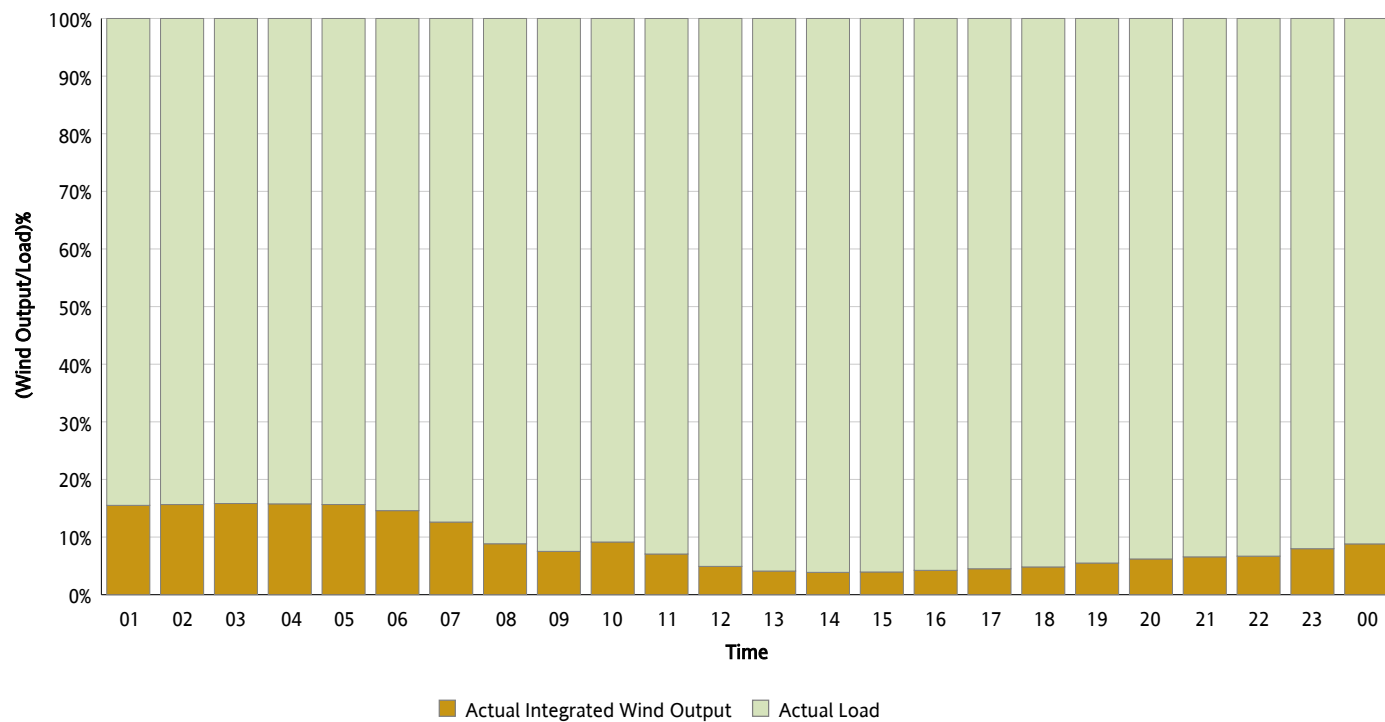
Actual Wind Output as a Percentage of the Total Installed Wind Capacity

08/04/2012



Actual Wind Output as a Percentage of the ERCOT Load

08/04/2012



ERCOT Load vs. Actual Wind Output

07/28/2012 - 08/04/2012

